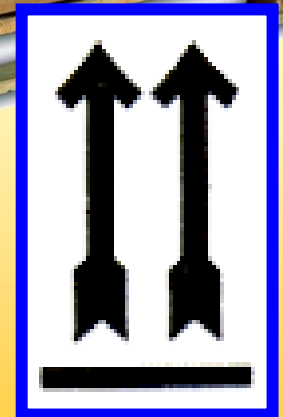
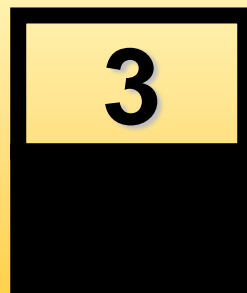
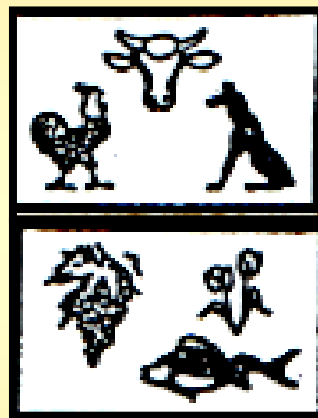
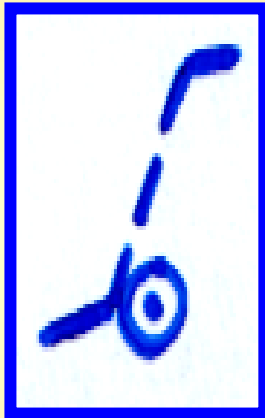
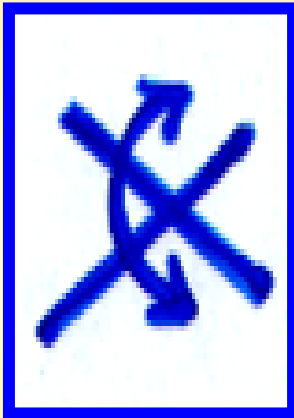
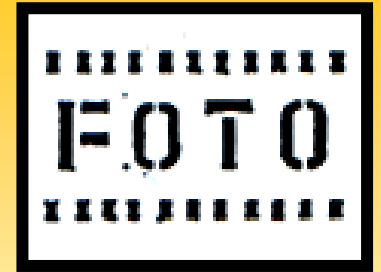
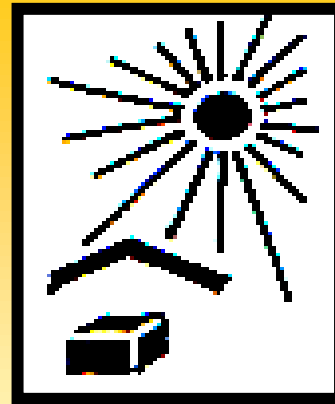
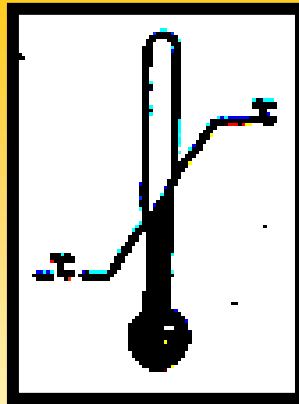
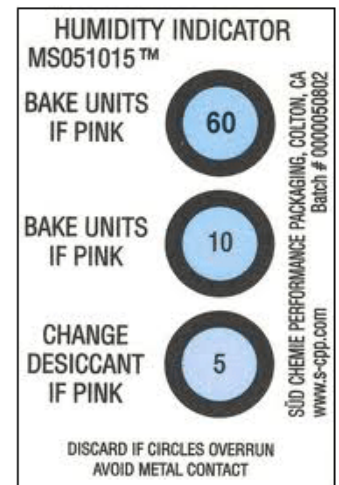
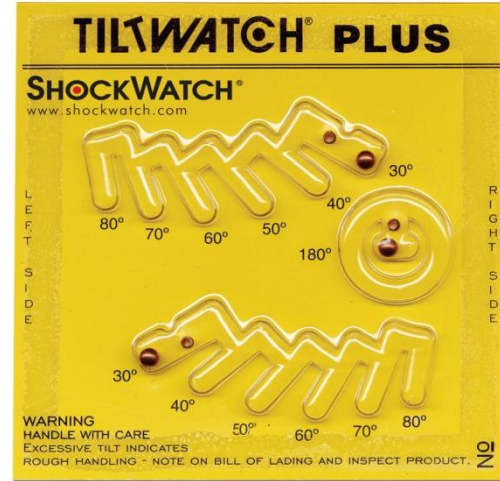
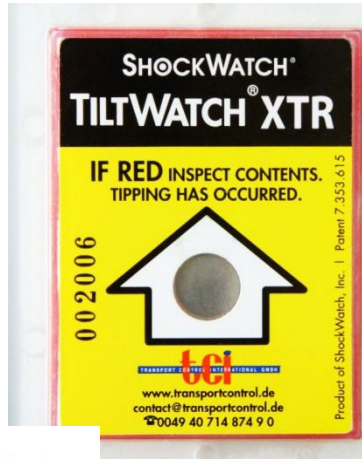
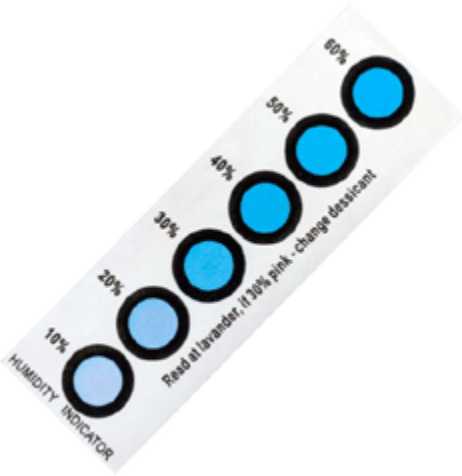


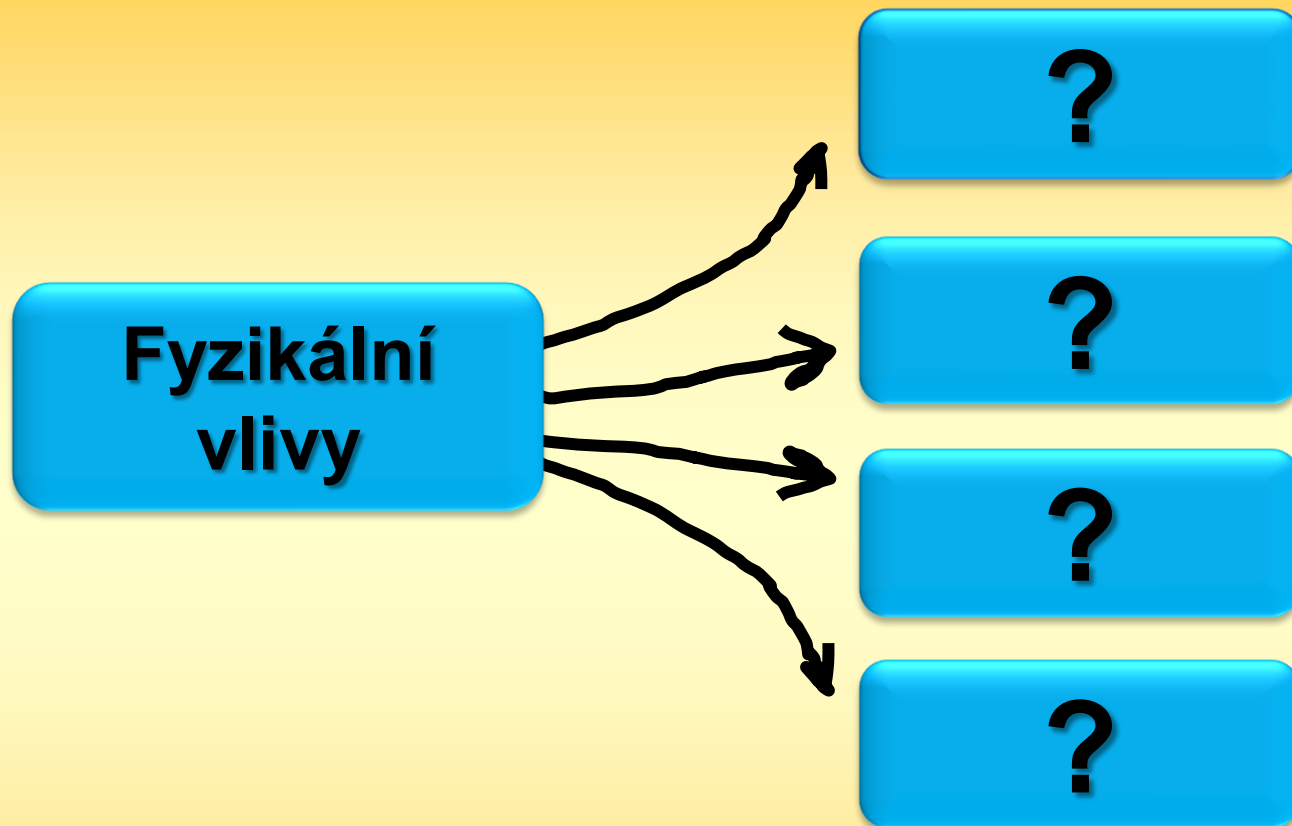
KATALOG

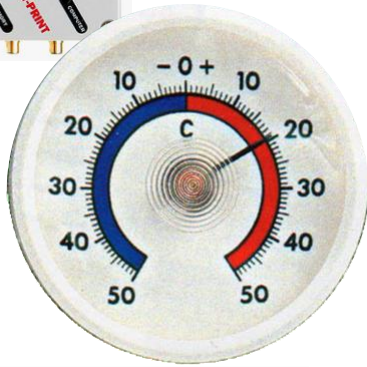
Škodlivé vlivy

Obrazová příloha pro zkoušení







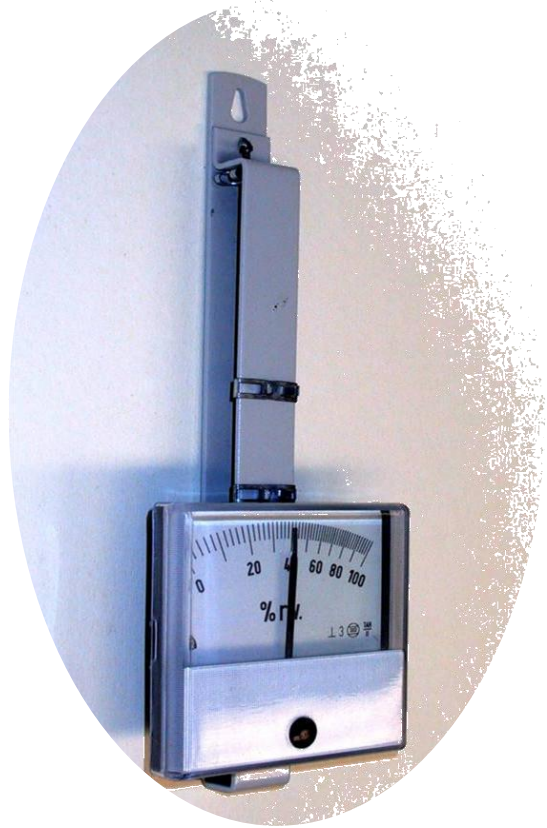


**Typy
teploměrů?**



**Měření teploty?
Zásady plnění?**

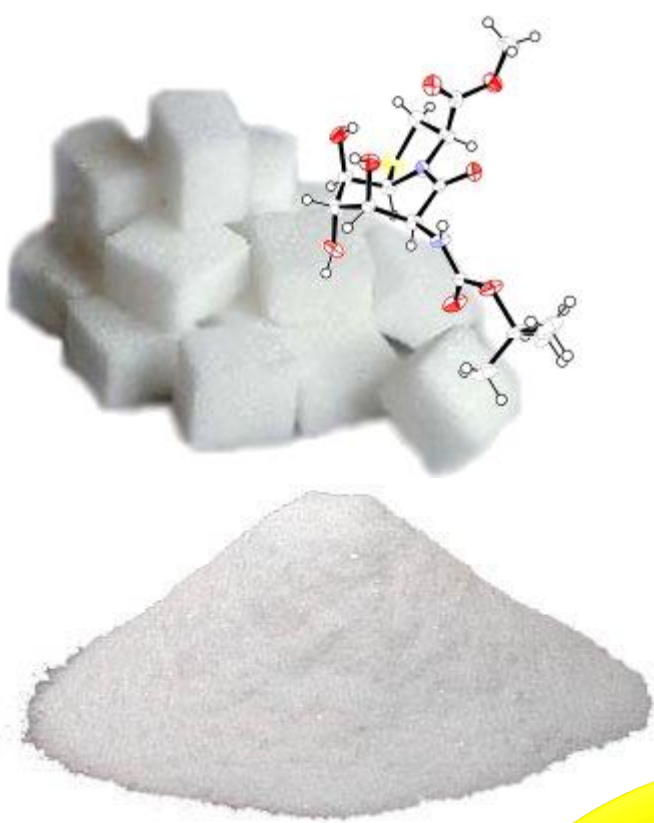




**Relativní
vlhkost?**

**Měření
relativní
vlhkosti?**





**Stanovené
relativní
vlhkosti?**



6685-12-194-4969

TROPACK Packmittel GmbH, D-6335 Lahnau 1

80%

70%

60%

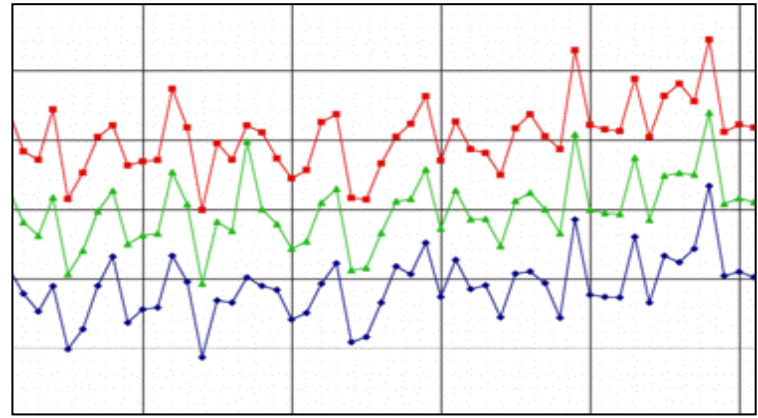
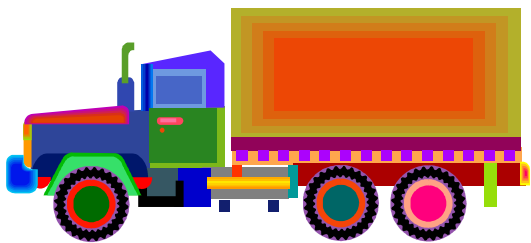
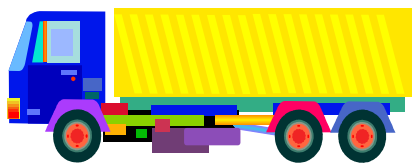
50%

40%

30%

20%

Metallkontakt vermeiden





Nasvěcování zboží?





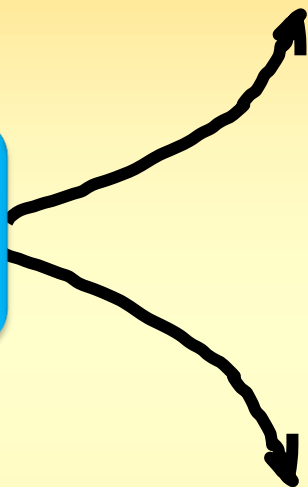
Ra 90



1B



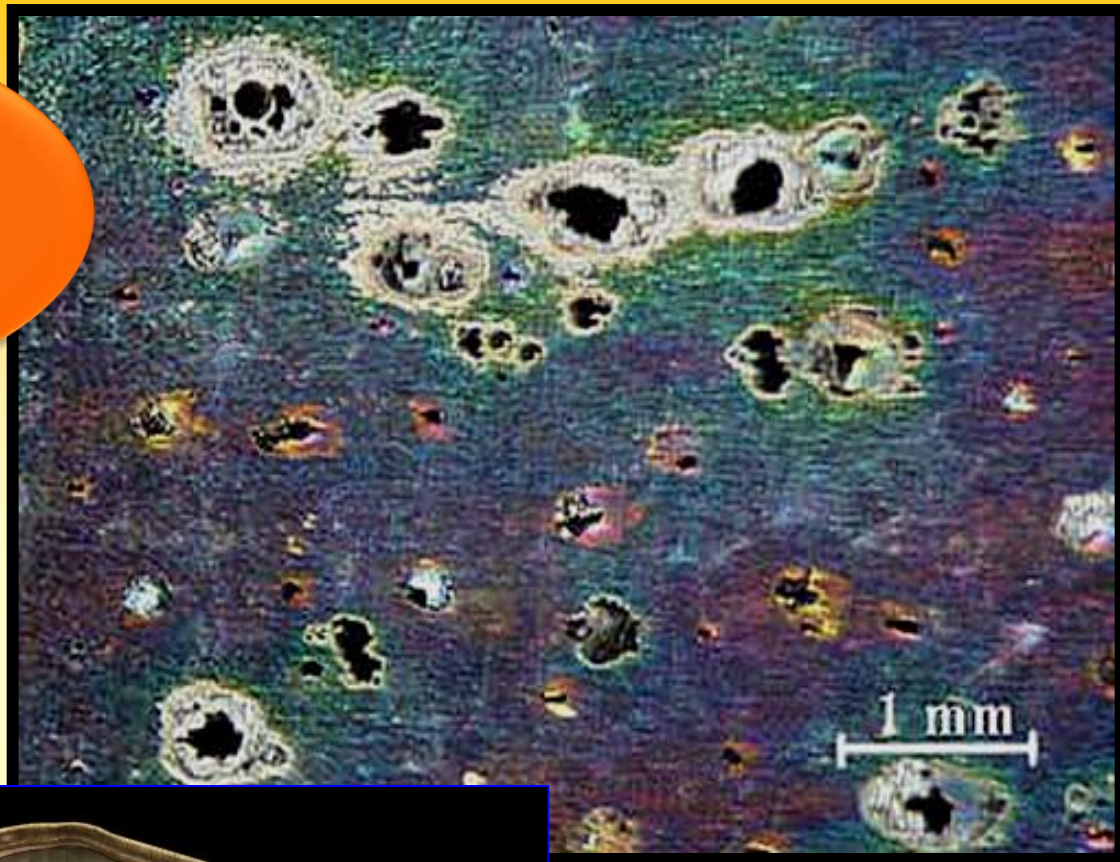
**Chemické
vlivy**



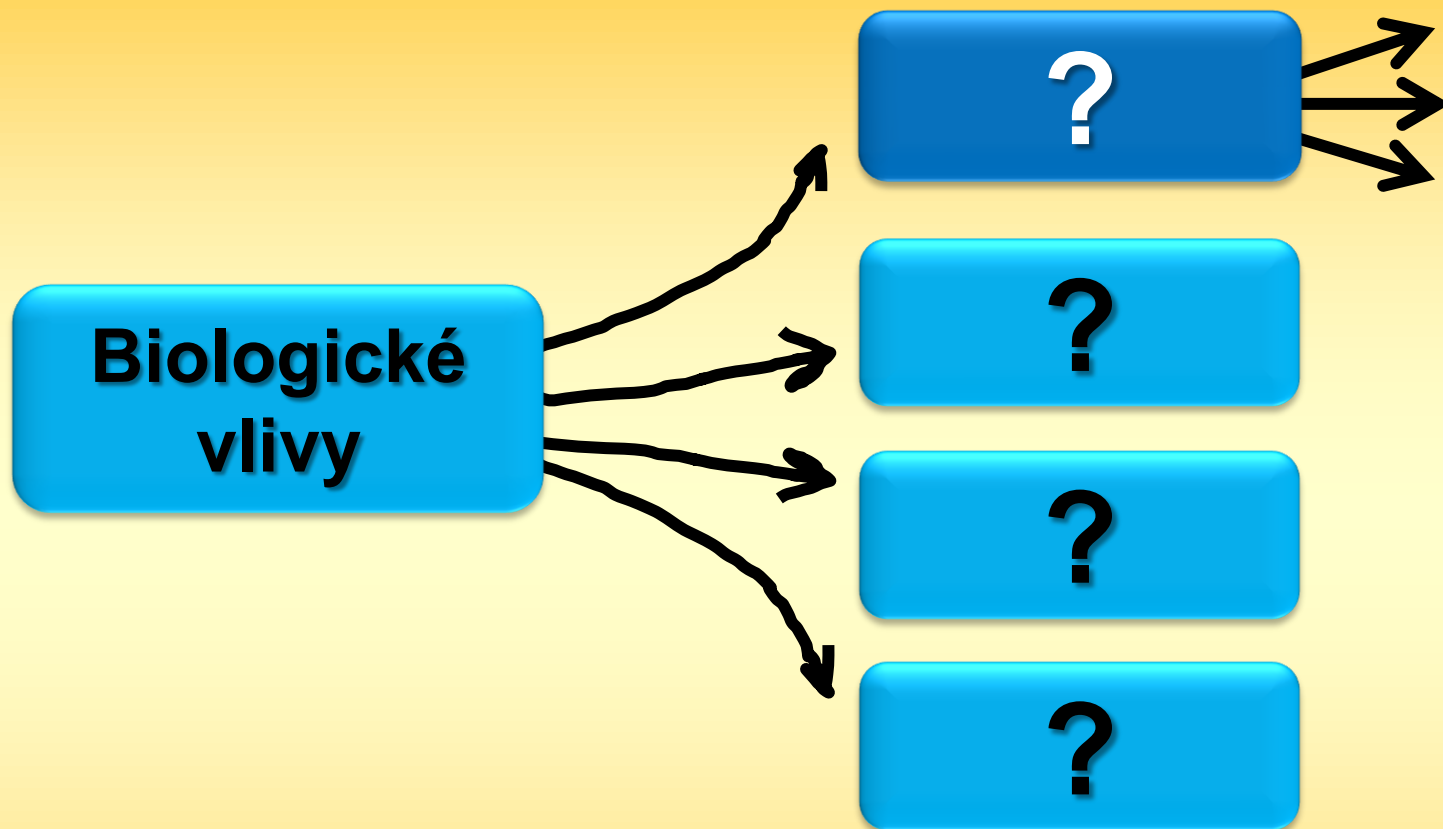
?

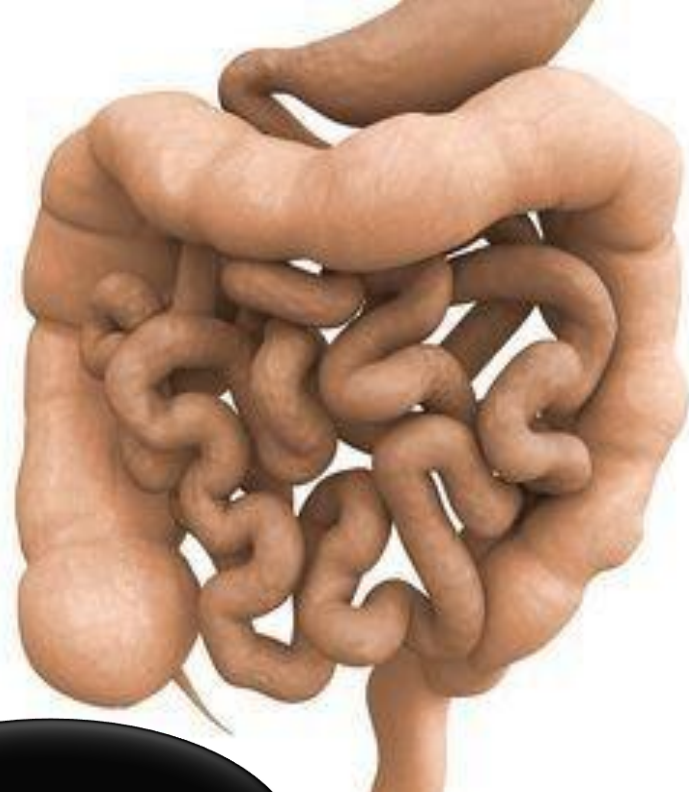
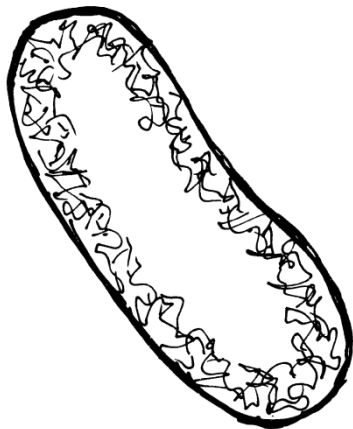
?

Salinita?

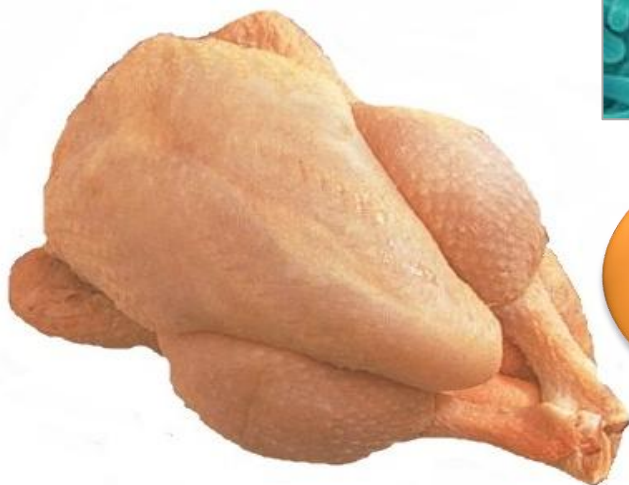


**Elektrochemická
koroze?**





Spory?

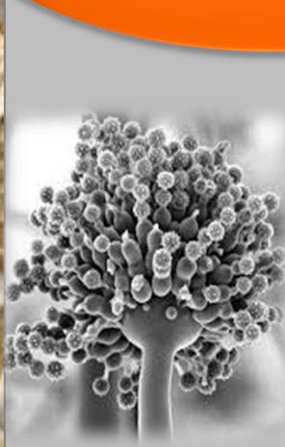


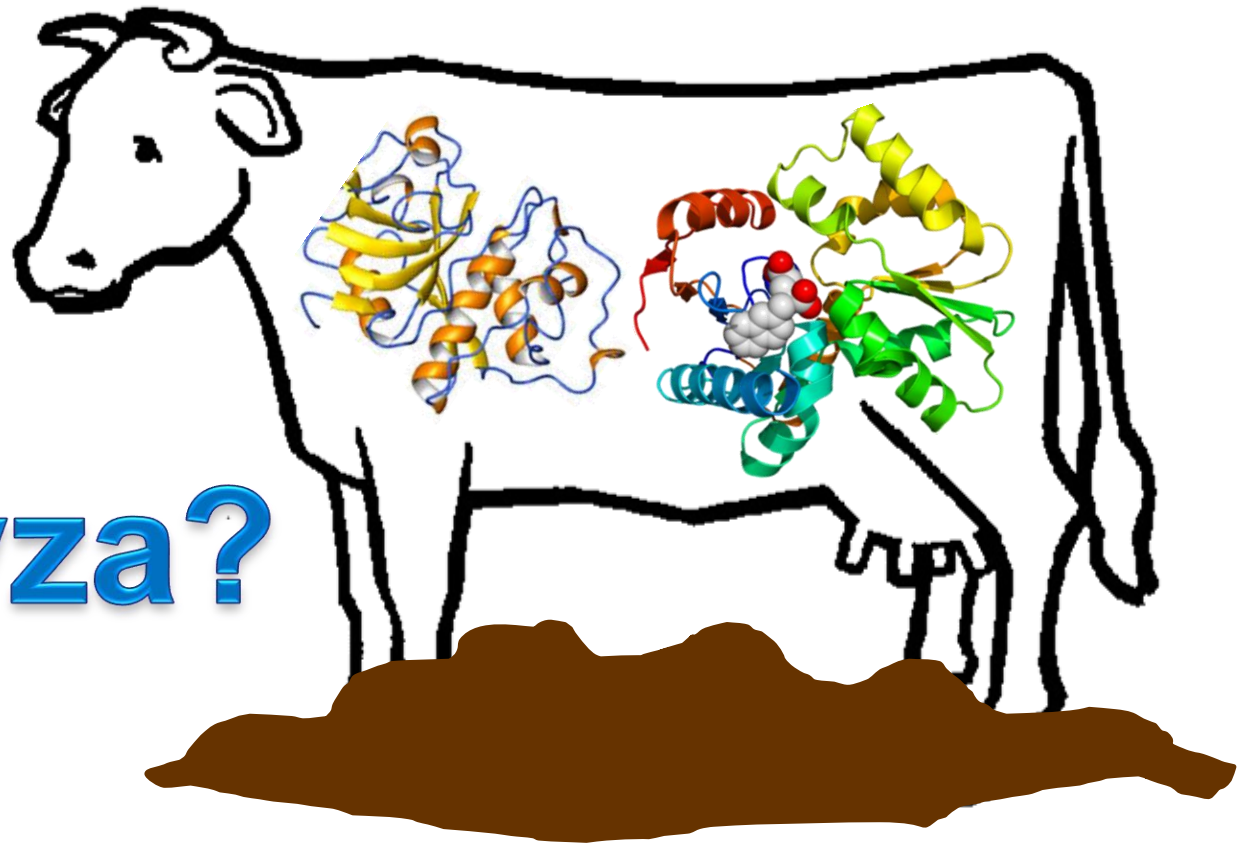
**Alimentární
onemocnění?**



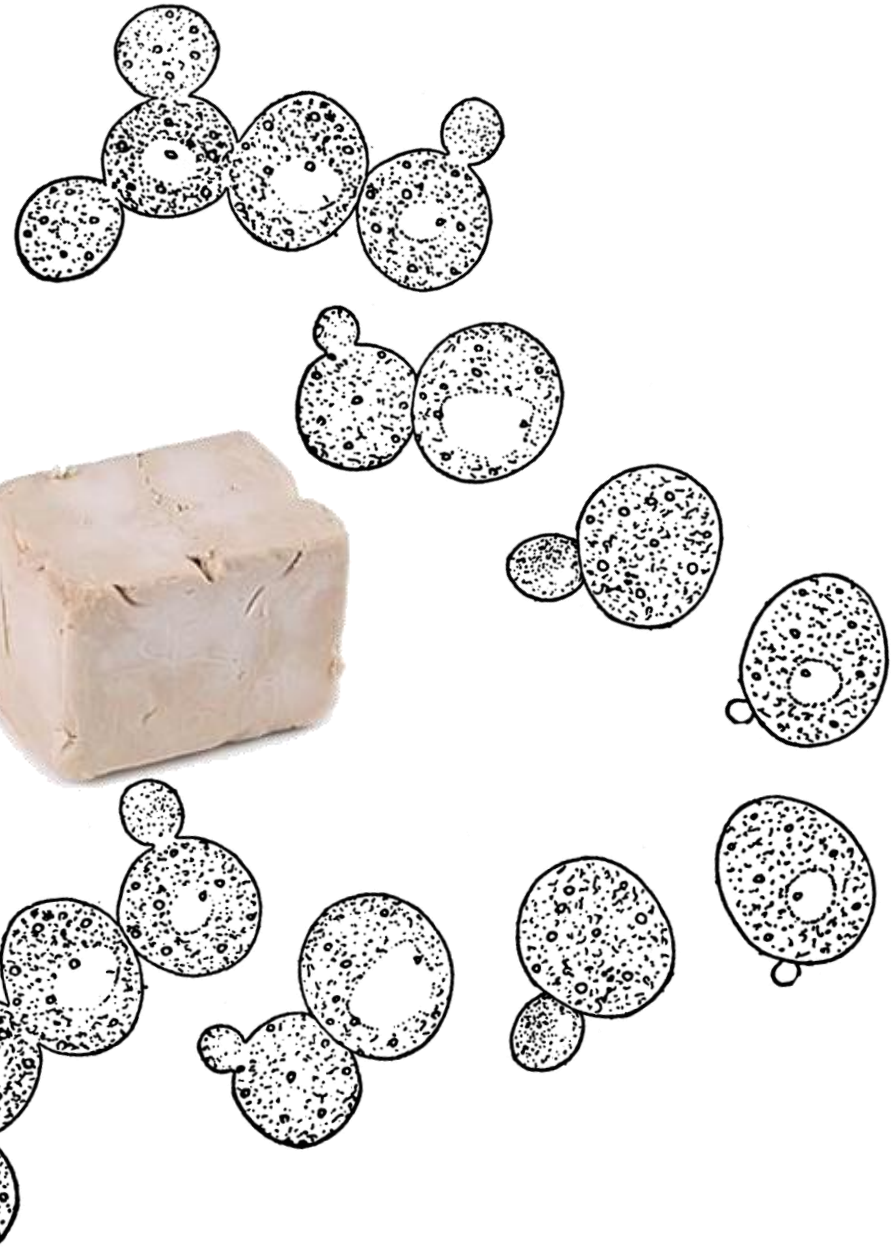
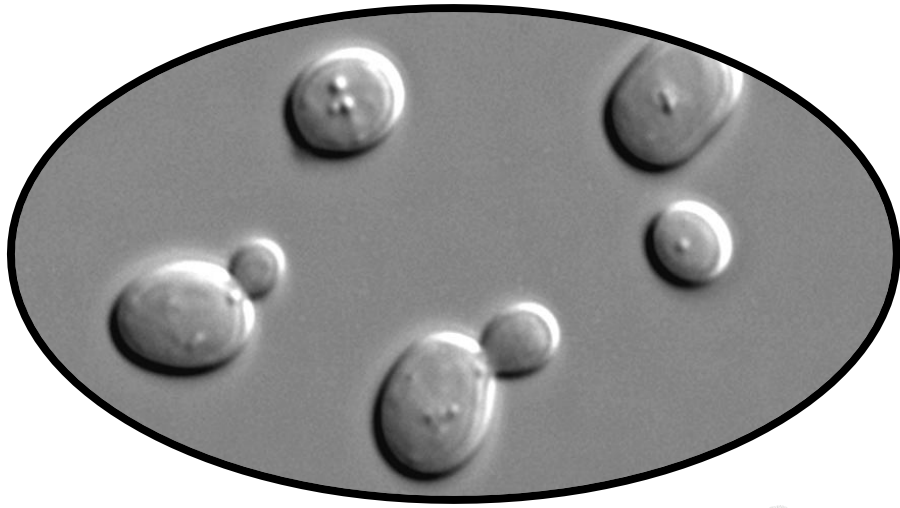


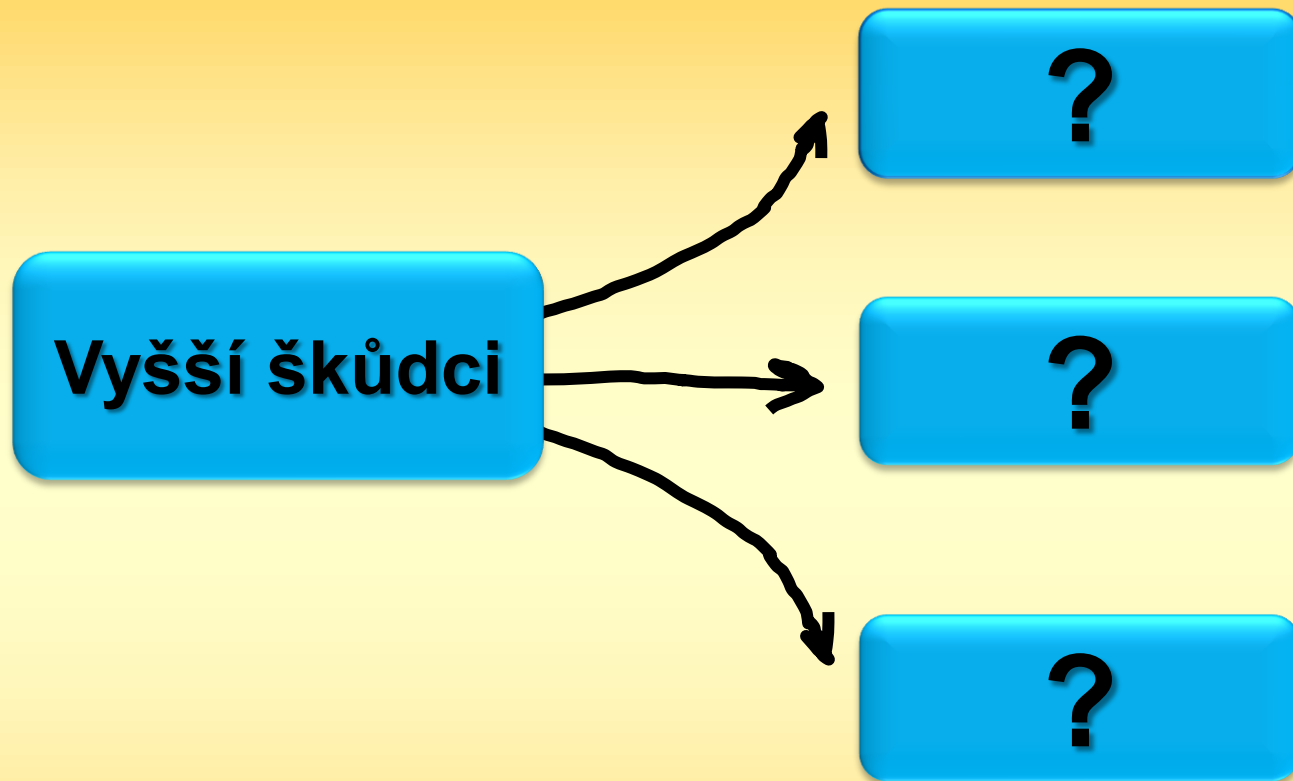
Mykotoxiny?

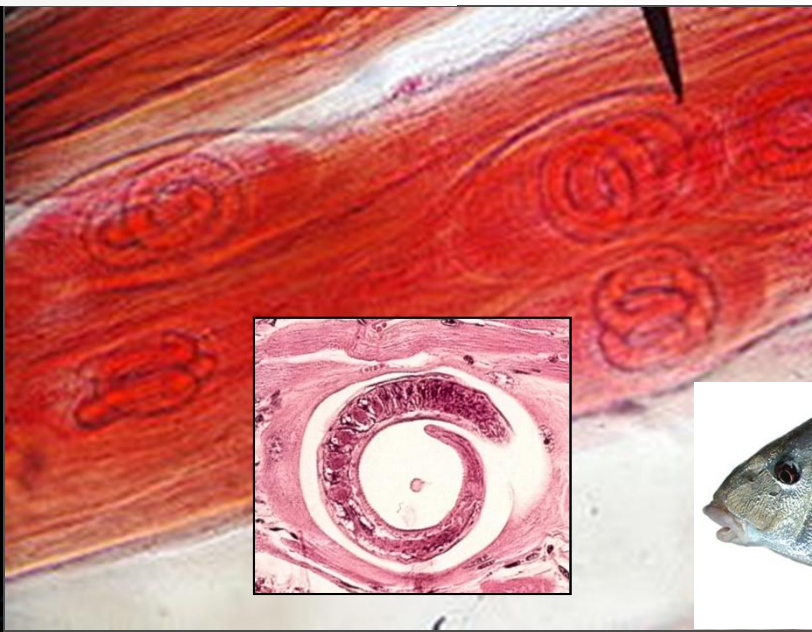
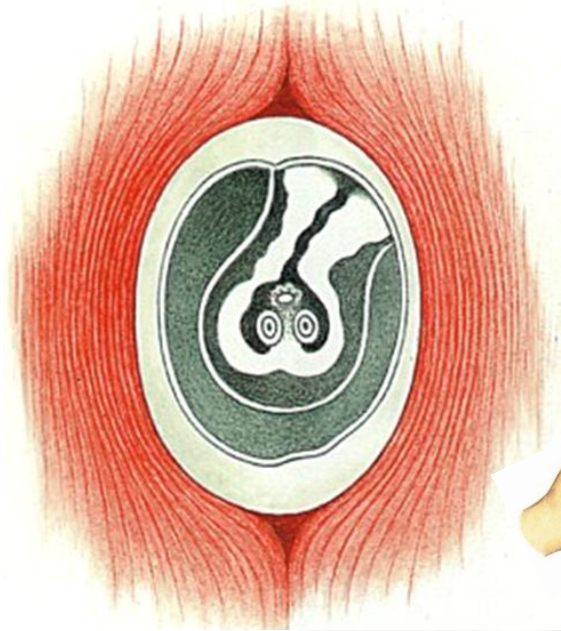


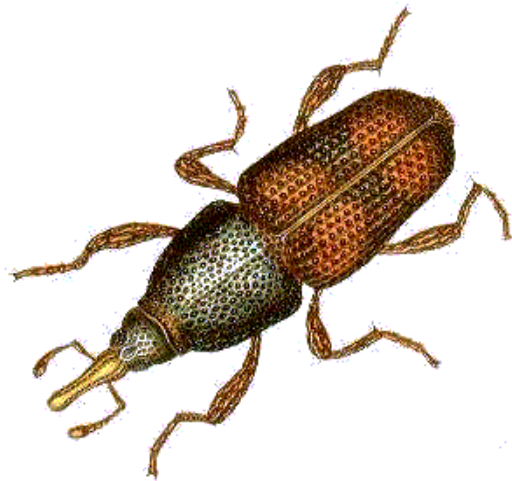
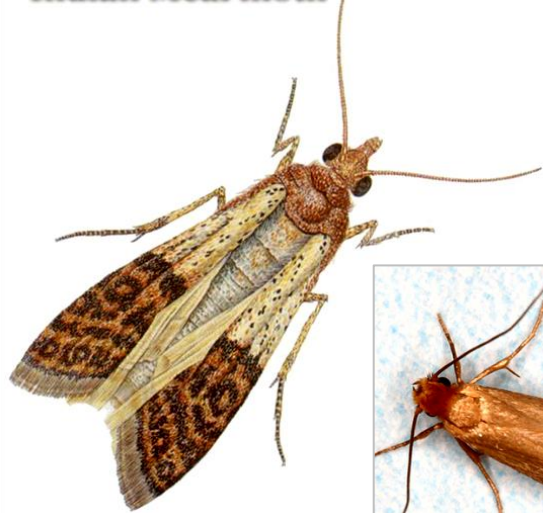


Autolýza?

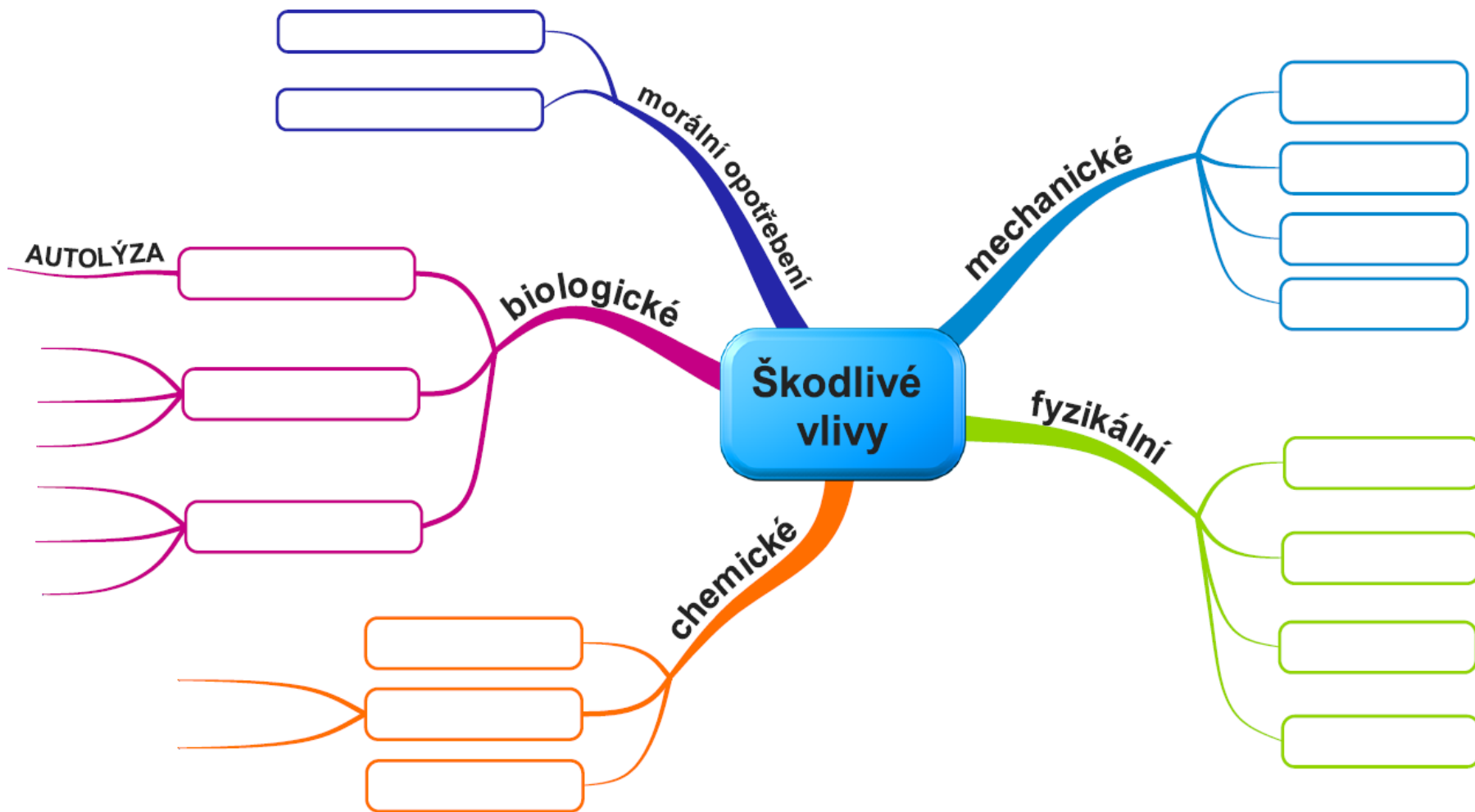








Vlivy působící na zboží ve sféře oběhu



Konec tématu